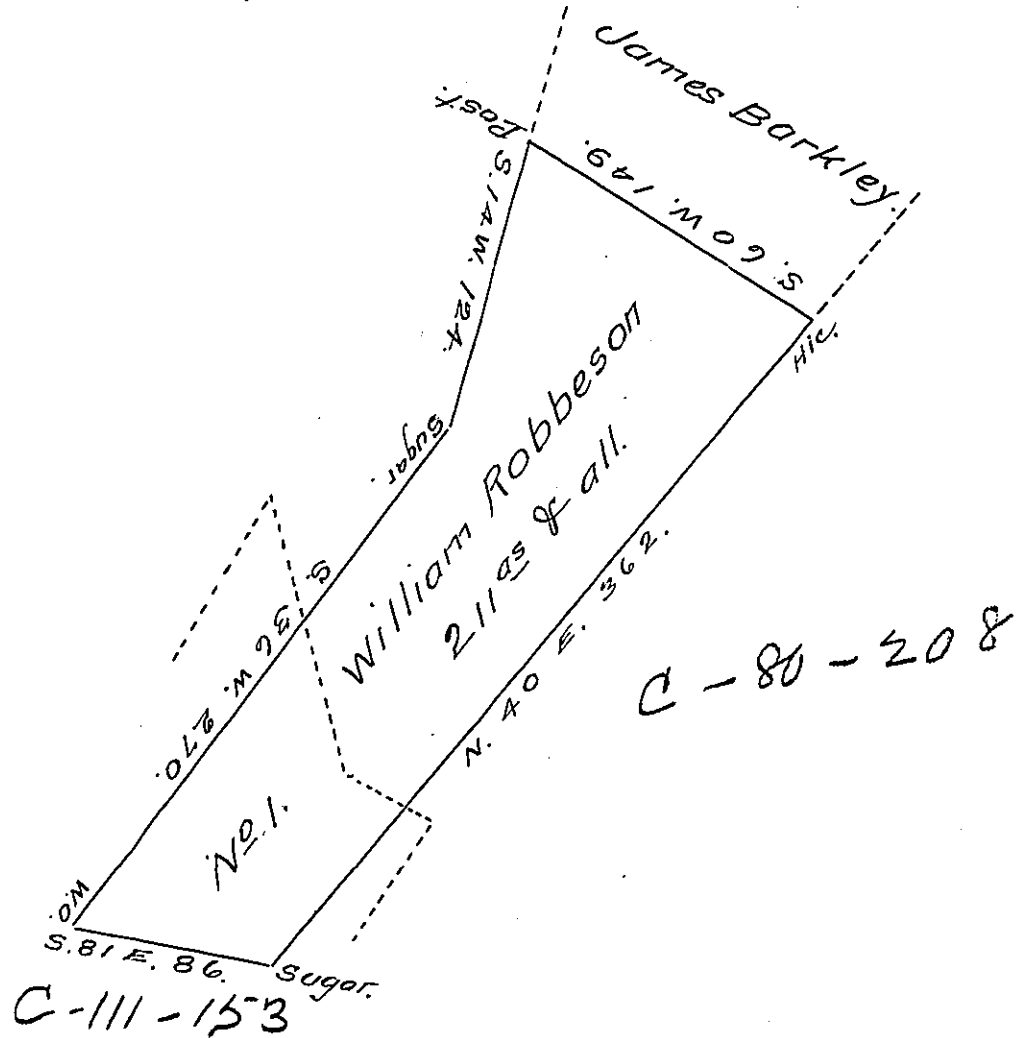


FORM No 1.



A Draft of a Tract of Land situate on Will's-Creek above the Narrows in Londondery Township, Bedford County - containing two hundred and Eleven acres and allowance of six per Cent for roads & so. surveyed for William Robbeson the — day of — on Warrant dated the 10th day of September 1762.

No. 1. represented by dotted lines is part of a Draft of a tract of land surveyed for George Keimbly on Warrant dated the 6th day of August 1762. This tract interferes Fifty Five acres with the William Robbeson Survey — George Keimbly conveyed to John Little and John Lukens — John Little's heirs viz. Dr. John Anderson of Bedford, George Espy James Ross of Pittsburg and others are the present owners of one half of said tract John Lukens devised his moiety to David Lennox whose heirs are the present owners of the other half part of said tract

To Gabriel Heister Esq. S. G.

James O'Connor D.S.

IN TESTIMONY that the above is a copy of the original remaining on file in the Department of Internal Affairs of Pennsylvania, made conformably to an Act of Assembly approved the 16th day of February, 1833, I have hereunto set my Hand and caused the Seal of said Department to be affixed at Harrisburg, this thirtieth day of September 1907.

Henry Howell

Secretary of Internal Affairs.